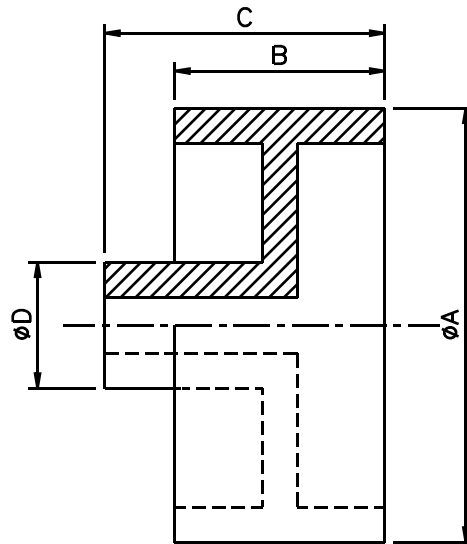


BRAKE DRUM



HALF SECTIONAL ELEVATION

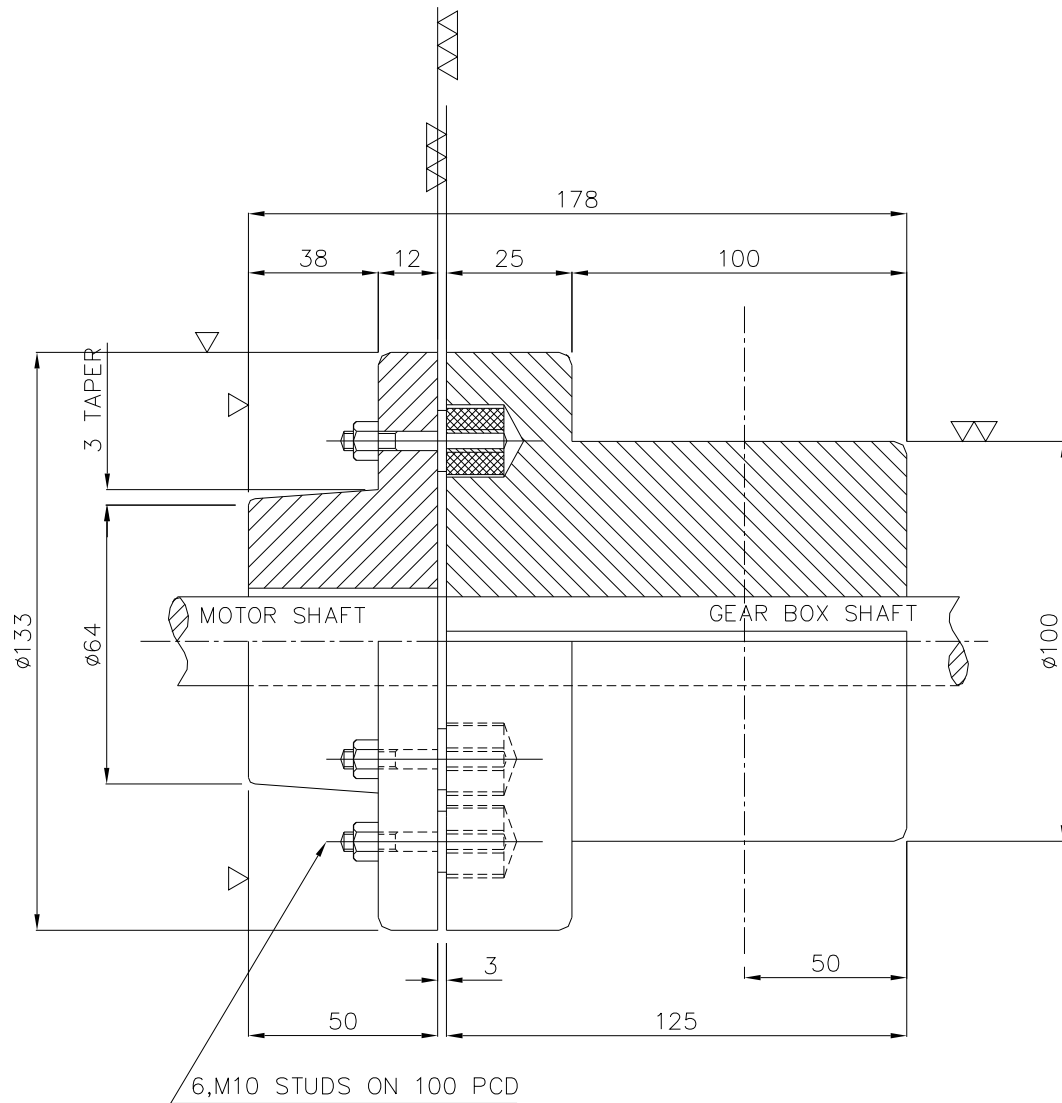
BRAKE DRUM SIZE	A	B	C	D MATERIAL-
BR 100	100	28	128	152
BR 150	150	80	103	75
BR 160	160	80	103	75
BR 200	200	102	110	92
BR 250	250	125	150	105
BR 300	300	150	190	135
BR 400	400	190	245	154
BR 500	500	210	245	164
BR 600	600	270	284	250

NOTES :

- 1) ALL DIMENSIONS ARE IN MM.
- 2) BRAKE DRUM WILL BE SUPPLIED WITH PILOT BORE OF 30mm DIA.

MATERIAL. :- CAST IRON

BRAKE DRUM COUPLING

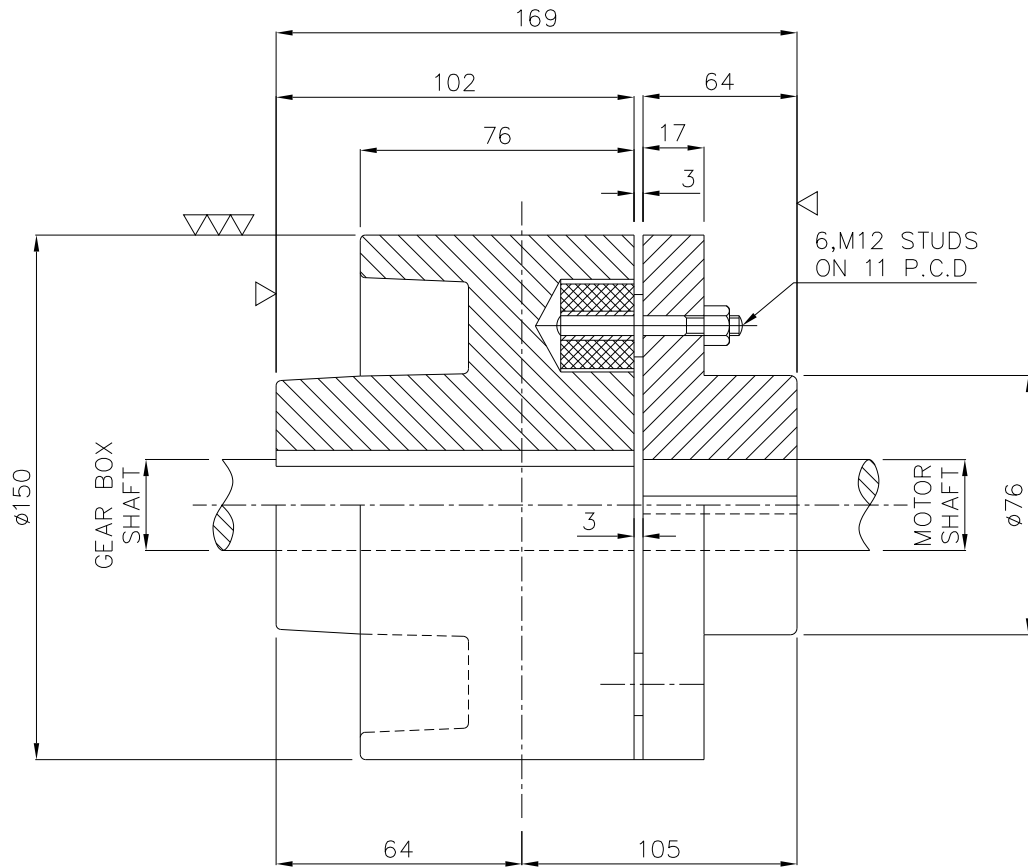


100mm/4" DIA BRAKE DRUM COUPLING

NOTE:— 1. Drum couplings are manufactured in inches and metric diameters.

MATERIAL. :- CAST IRON

BRAKE DRUM COUPLING



6" DIA BRAKE DRUM COUPLING

(TYPE-CD6/CDM15)

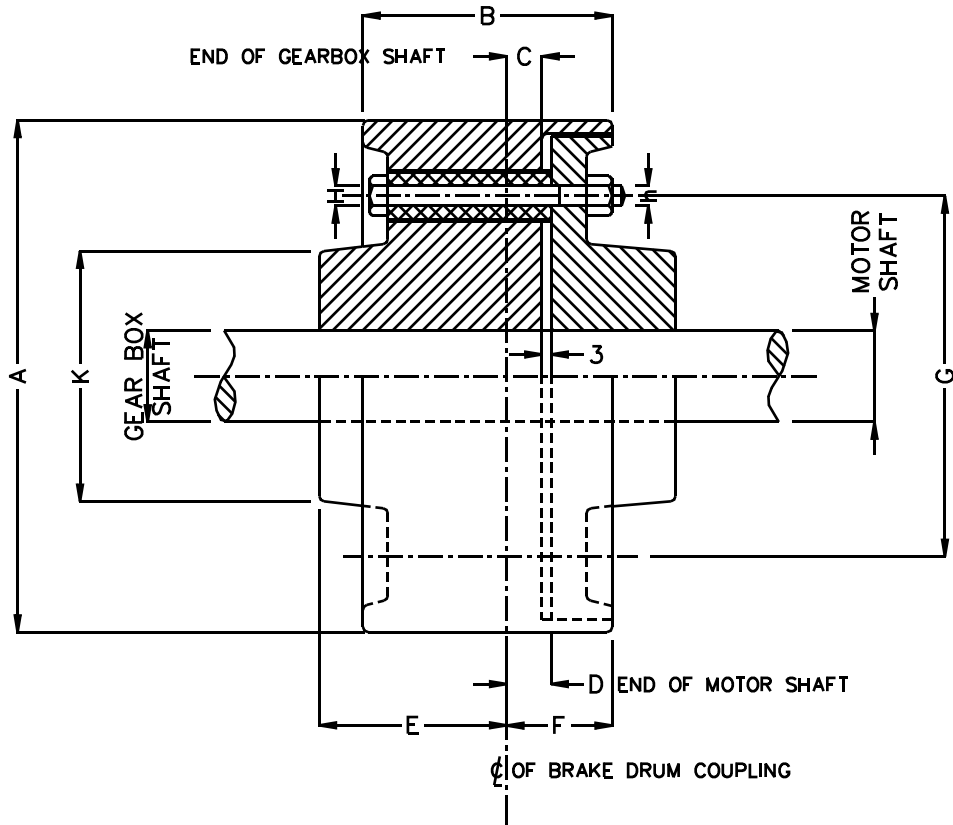
NOTE: - 1. Drum couplings are manufactured in inches and metric diameters.

$$\underline{\underline{GD^2 = 0.07 \text{ kg.m}^2}}$$

MATERIAL. :- CAST IRON

BRAKE DRUM COUPLING

PRINCIPLE DIMENSIONS OF BRAKE DRUM COUPLINGS

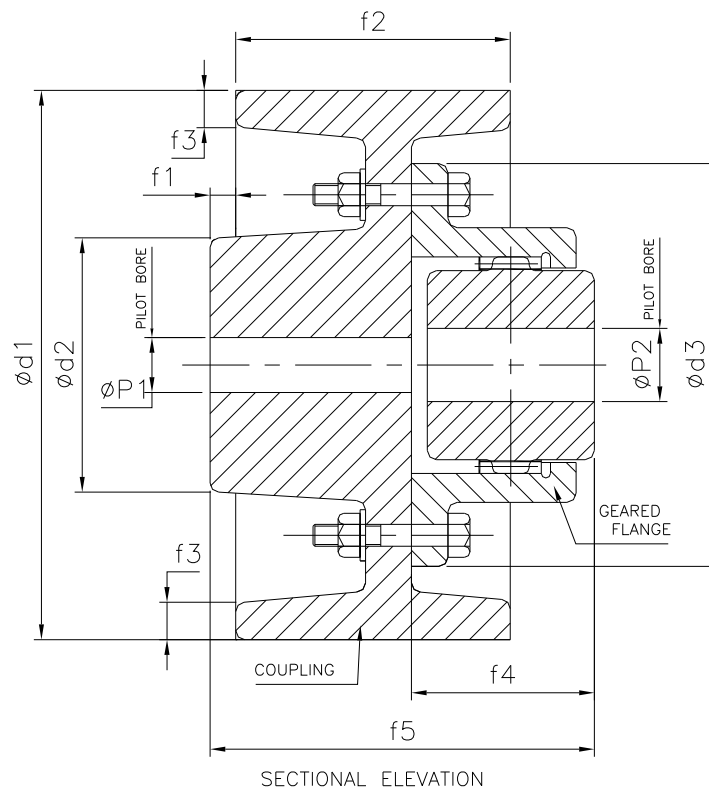


TYPE	DIMENSIONAL DETAILS											NO. OF BOLTS	WT. IN Kg.	CD ² Kg.m ²
	A	B	C	D	E	F	G	BOLT SIZE		K				
								H	J					
CD8 CDM 20	8" 200	102	6	10	57	73	130	16	12	92	6	16	0.29	
CD10 CDM 25	10" 250	127	6	10	82	98	156	19	16	107	6	37	1.04	
CD12 CDM 30	12" 300	152	6	10	89	105	197	22	20	143	6	60	2.43	
CD15 CDM 38	15" 380	165	3	6	112	121	233	25	22	146	6	77	5.03	
CD18 CDM 45	18" 450	184	0	3	133	137	267	25	22	159	8	170	15.50	
CD20 CDM 50	20" 500	210	6	9	144	159	290	25	22	210	8	160	18.00	
CD21 CDM 52	21" 525	197	6	10	146	162	311	25	22	220	8	242	31.00	
CD25 CDM 60	25" 600	275	6	10	146	162	400	30	25	250	10	300	50.07	
CDM-400	400	200	6	6	115	120	233	25	22	150	6	95	5.5	

MATERIAL. :- CAST IRON

GEARED BRAKE DRUM COUPLING

PRINCIPLE DIMENSIONS OF BRAKE DRUM COUPLINGS



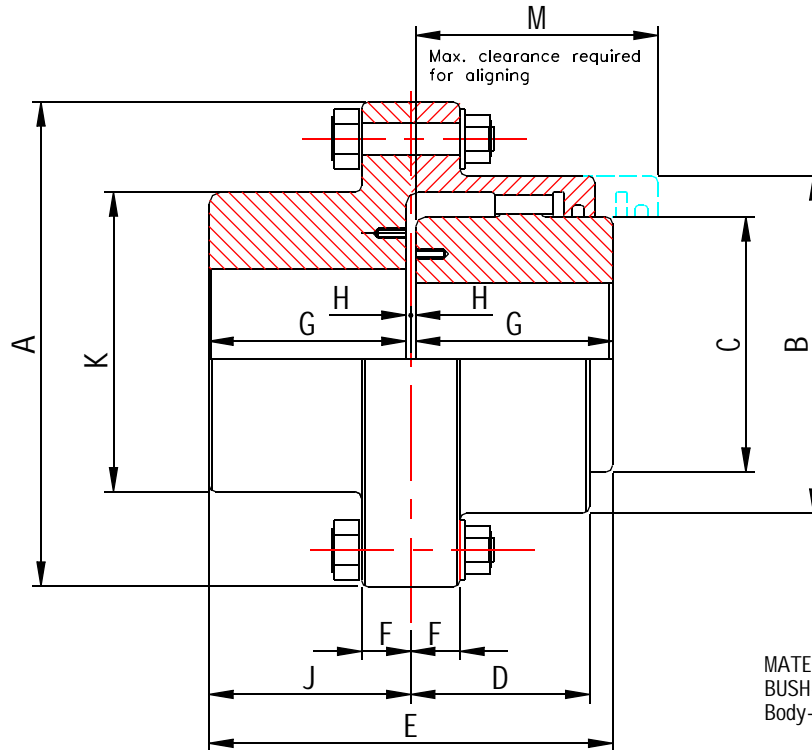
DIMENSIONAL DETAILS

SR. NO.	BRAKE DRUM $\phi d1$	$\phi d1$	$\phi d3$	PILOT BORE		FINISHED BORE MAX. BORE SIZE		f1	f2	f3	f4	f5
				$\phi P1$	$\phi P2$	in coupling	in flange					
1	200	100	170	20	20	40	50	6	100	12	57.5	120
2	250	110	185	20	30	42	60	20	125	16	72.5	160
3	300/305	140	220	30	40	55	75	15	152	18	87.5	180
4	380	145	250	35	50	55	90	25	165	20	107.5	215
5	400	150	290	30	60	58	110	25	175	20	115	230
6	500	175	320	40	75	85	125	25	200	20	130	265

MATERIAL. :- CAST IRON

HALF GEAR COUPLING

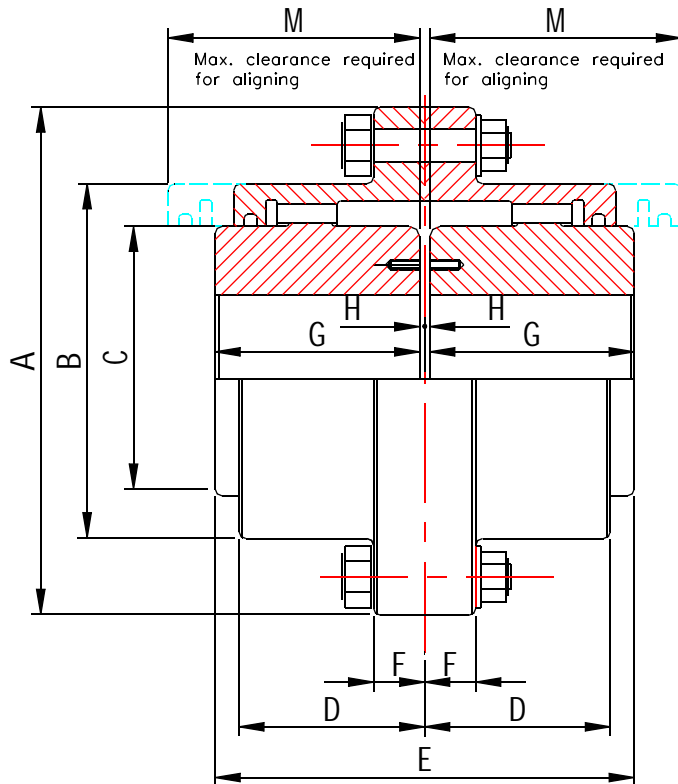
PRINCIPLE DIMENSIONS OF HALF GEAR HALF RIGID COUPLINGS



SIZE S.H.G	Max. Bore in mm		Pilot. Bore in mm.	Load Capacity		Max. R.P.M.	Weight with solid hubs in Kg	G.D.2 Kg. M	DIMENSIONAL DETAILS										
	In. Gear Flange	In. Rigid Flange		Torque Kg. M	HP Per 1000 R.P.M.				A	B	C	D	E	F	G	H	J	K	M
100	35	50	10	50	7	8000	4.2	0.03	120	75	50	39.5	93	15	45	1.5	46.5	70	45
101	45	60	20	100	14	6300	10	0.14	170	110	65	49	115	17	55	2.5	57.5	80	65
102	60	75	30	250	35	5000	15	0.20	185	125	85	62	145	17	70	2.5	72.5	110	80
103	75	90	40	450	63	4000	26	0.48	220	150	105	78	175	20	85	2.5	87.5	130	105
104	90	110	50	850	119	3350	40	0.95	250	175	130	96	215	20	105	2.5	107.5	160	125
105	110	130	60	1300	182	2800	62	1.90	290	200	155	106	230	25	110	5	115	185	140
106	125	150	75	2000	280	2500	85	3	320	230	175	117	260	25	125	5	130	215	155
107	140	170	90	3500	490	2100	120	5.25	350	260	205	134	290	25	140	5	145	240	175
108	160	200	105	4500	630	1900	180	8.50	380	290	230	147	320	25	155	5	160	285	190
109	180	220	125	5600	784	1700	210	15	430	330	250	156	340	25	165	5	170	315	205
110	220	260	140	8200	1184	1400	290	30.50	490	390	310	171	370	25	180	5	185	370	220

FULL GEAR COUPLING

PRINCIPLE DIMENSIONS OF FULL GEAR HALF RIGID COUPLINGS



MATERIAL-
BUSH-FORGED-En-9
Body-FORGED-En-8

SIZE S.F.G.	Max. Bore in mm.	Pilot. Bore in mm.	Load Capacity		Max. R.P.M.	Weight with solid hubs in Kg	G.D.2 Kg. M	DIMENSIONAL DETAILS								
			Torque Kg. M	HP Per 1000 R.P.M.				A	B	C	D	E	F	G	H	M
100	35	10	50	7	8000	4.2	0.03	120	75	50	39.5	93	15	45	1.5	45
101	45	20	100	14	6300	10	0.14	170	110	65	49	115	17	55	2.5	65
102	60	30	250	35	5000	15	0.20	185	125	85	62	145	17	70	2.5	80
103	75	40	450	63	4000	26	0.48	220	150	105	78	175	20	85	2.5	105
104	90	50	850	119	3350	40	0.95	250	175	130	96	215	20	105	2.5	125
105	110	60	1300	182	2800	62	1.90	290	200	155	106	230	25	110	5	140
106	125	75	2000	280	2500	85	3	320	230	175	117	260	25	125	5	155
107	140	90	3500	490	2100	120	5.25	350	260	205	134	290	25	140	5	175
108	160	105	4500	630	1900	180	8.50	380	290	230	147	320	25	155	5	190
109	180	125	5600	784	1700	210	15	430	330	250	156	340	25	165	5	205
110	220	140	8200	1184	1400	290	30.50	490	390	310	171	370	25	180	5	220