

# Flame Proof IIA / IIB Junction Box

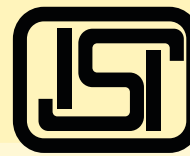
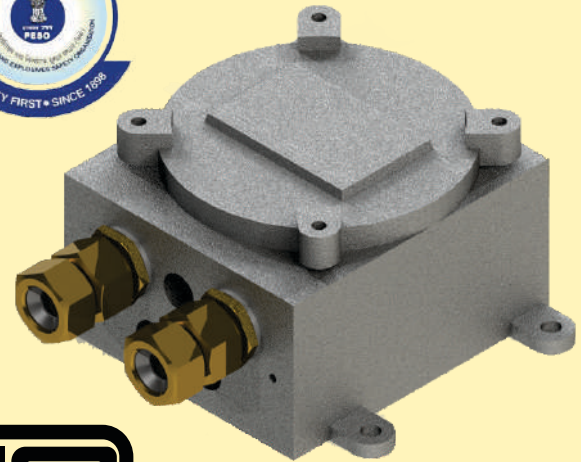


## Introduction

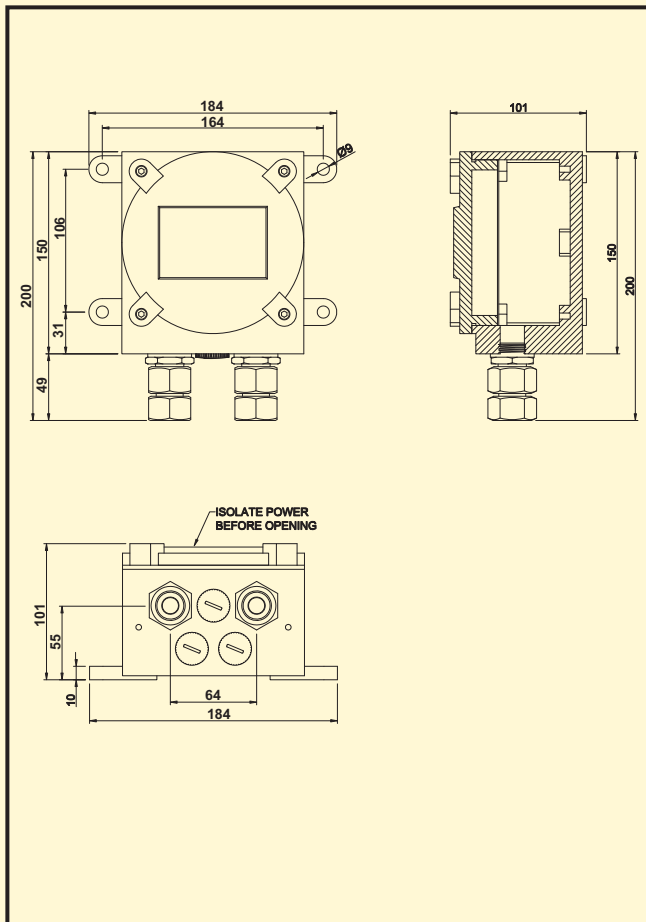
Flame-proof **Junction Box** FLP-JB is used to trip motor supply when the moving loads reach the extreme end positions of working zone. These are suitable for use in explosive gases, as specified Gas groups I, IIA and IIB, as per IS/IEC 60079-0-2007 & IS/IEC 60079-1-2007.

## Operation

A two (or more) Contact elements are operated by respective rotating cams, suitably adjusted on a cam-shaft. Which rotates with fixed speed ratio of the drive motor shaft. The cams can be step lessly positioned so that they trip motor supply and stop the motion at the set point of travel. The Junction Box with IP-54 degree of protection are available in desired NO/NC contacts combinations as specified gear ratio.



## G.A. Drawing



## Technical Data

Explosive Atmosphere Part I Equipment Protection by Flameproof Enclosures "d"	
Product	Junction Box
Zone	Zone 1, Gas Groups I, IIA & IIB
Model	FLP-JB-IIA & IIB
Voltage	Upto 500 VAC
Ambient Temperature	-20°C + 40°C
Enclosure	Aluminium Alloy LM 4
Ingress Protection	IP-54 (IEC 60529(1989))
Cable Entry	M 20 Single
IS	IS/IEC 60079-0-2007 IS/IEC 60079-1-2007
BIS License No.	CM/L-7200042490 as per IS/IEC 60079-1-2007 Date: 25/06/2019
Certificate No.	CIMFR/Tc/P/33 Date: 01-04-2019 Central Institute of Mining & Fuel Research
Petroleum & Explosive Safety Organization (PESO)	A/P/HQ/GJ/104/5699(P455000) Date: 26/09/2019